

Looking closer. Seeing farther.

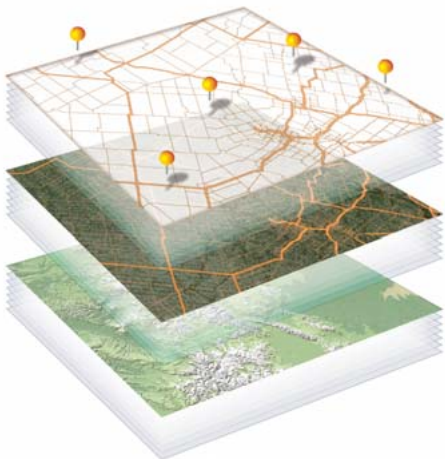
- Waypoint's innovative spatial platform delivers online services for a broad range of industry and government segments.

Easily customized, Waypoint provides effective implementation services to get customers up and running quickly.

PANORAMA

Waypoint Panorama™ is a hosted online spatial information platform that can readily be configured to satisfy a wide variety of mapping, analysis, monitoring, and tactical requirements. Provided as a cost effective subscription service, it is highly optimized for sharing and analyzing spatial data. The Panorama platform provides all the benefits of working from anywhere on a single source of up-to-date information.

waypoint solution ••



superlayer architecture



Lower Cost...

Waypoint provides all the application software, IT infrastructure, and extensive geographic data needed to meet customer objectives. Waypoint delivers powerful mapping and analysis services at a fraction of the cost of implementing and using conventional personal or enterprise Geographic Information Systems.

The Panorama platform is hosted on a highly redundant, load balanced cluster of servers, with multiple nodes for map rendering, file storage, database operations, spatial analysis and input processing. When you subscribe to the Panorama service you enter a world of sophisticated web mapping with no hardware, software, or data purchases, and no IT personnel requirements!

Easy Access...

Panorama comprises a complete set of hosted software applications for managing and working with your spatial information. With a true light-client map application, sophisticated web administration and reporting, and as-needed delivery of analytical components, the power of the system is readily accessed from any internet connection without the need for bulky downloads.

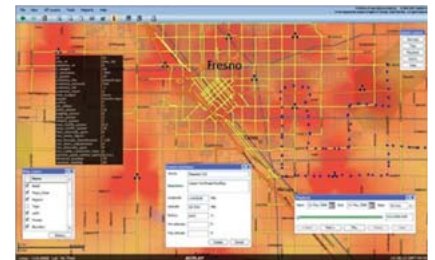
Superlayer Architecture...

Panorama excels at mapping and analyzing vast amounts of disparate spatial data. Unlike systems that support static base-maps and a simple overlay of a thematic layer, the Panorama map engine groups related map layers into "superlayers".

Each individual layer within a superlayer can be turned on or off or made partially transparent, and each superlayer can be turned on/off or manipulated with on-the-fly transparency. This greatly facilitates multi-layer thematic analysis. Users can upload their own map data into the Customer Superlayer that is sandwiched between Panorama's Map Superlayer (detailed roads, rivers, place names, and points of interest) and Imagery Superlayer (detailed satellite, elevation, photo and associated imagery).

The Interactive Superlayer is a fourth superlayer on top that allows objects to be created and displayed on-the-fly, and can display objects from external databases. Graphic objects or their attributes can be selected, moved or edited onscreen, enabling powerful multi-user collaboration on a single hosted file. For each object, hyperlinks to multimedia content can be established (such as pictures, documents, or movies).

Waypoint's high-availability cluster serves a wealth of geo-information to an advanced visualization application, allowing you to combine your spatial business layers into the mix, rapidly implementing a sophisticated, full-screen, online mapping, publishing, collaboration, and analysis workplace.



Work Faster, Better, Be Up-To-Date...

Upload or link to your key stakeholder information, then access this through Panorama's host of built-in analytical and collaboration tools. Your web mapping becomes a rich single source of centralized information accessible to your users.

Panorama Extensions

Waypoint Tracker

This powerful on-line asset tracking and analysis extension for Panorama is designed to support large numbers of mobile wireless location devices in near real-time. A fast and scalable system, it can be optimized to work with any GPS wireless tracking device. Customers can track and analyze their assets by web browser, or receive automatic event notification and reporting.

Waypoint Publisher

This customizable extension can become the central workplace for many of your spatial business intelligence tasks, by adding project management capabilities, including annotation, messaging, object editing and creation.

Panorama Core System Components:

- A robust and secure database system designed for high volume applications, concurrency, and extensibility, with proven stability and reliability.
- An Administration Console that provides access to accounts, permissions, and access levels, reporting, analysis, set-up, custom applications, and configuration tools.
- A fast and powerful map serving engine delivering content reliably and effectively.
- An extensive library of map data covering millions of miles of attributed roads, points of interest, detailed hydrography, topo mapping, elevation models, Landsat imagery, and much more.
- A true light-client, Flash®*-based map application that works with any web browser. No large software downloads are needed. The intuitive, full-screen, map viewer is rich with features such as on-the-fly transparency, interactive objects and analytical functions.

* Flash® is a registered trademark of Macromedia, Inc.



Tel: 1.888.854.5377
Email: sales@geo-e.com
Website: www.geo-e.com